

OPHTHALMOLOGY DEPARTMENT

**Tata Main Hospital
C Road West, Northern Town
Bistupur, Jamshedpur**

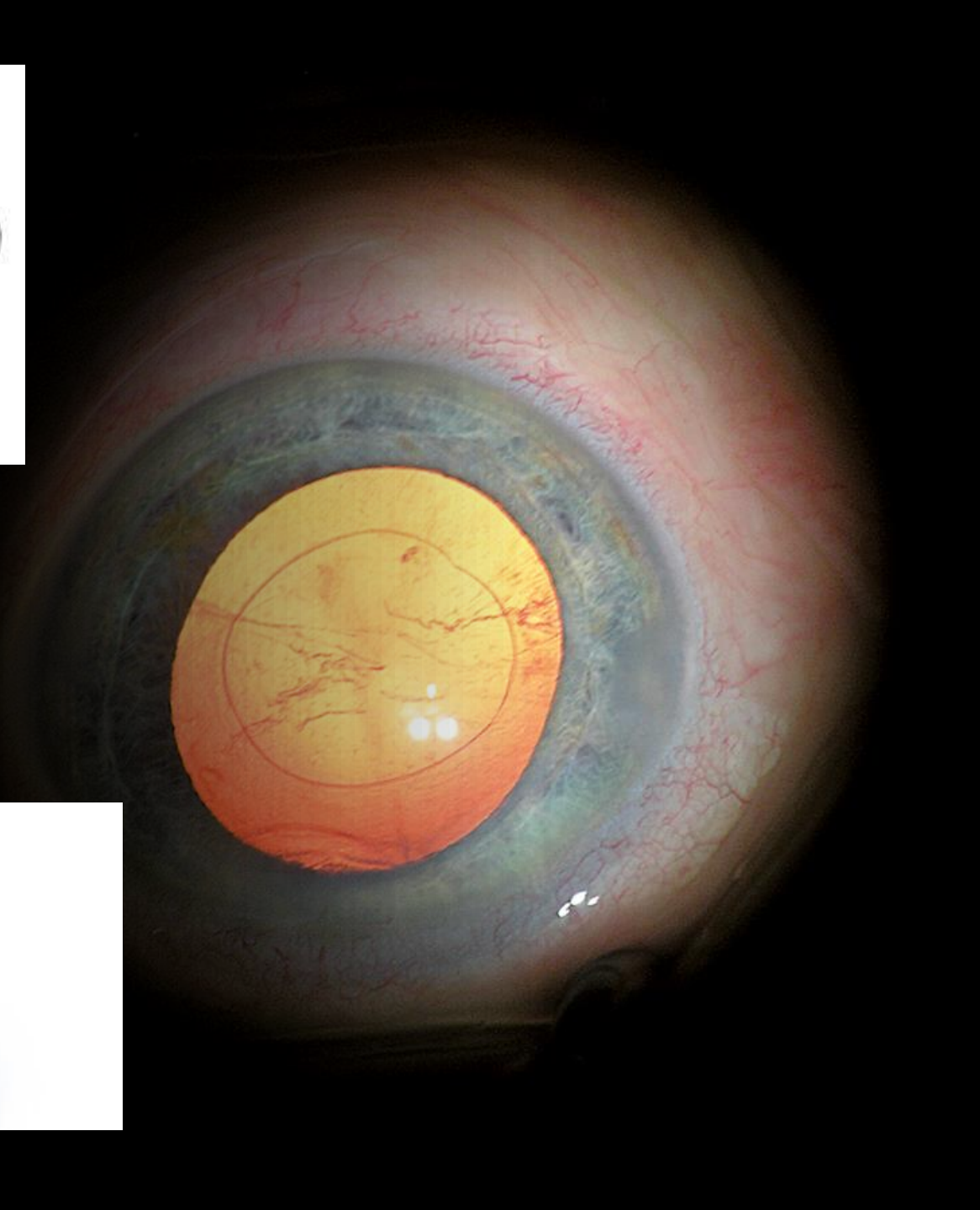
**OPD Helpdesk No : 0657 6641012 (9am - 6pm)
Ophthalmology: 0657 6641213 (9am - 6pm)**

OPHTHALMOLOGY OPERATION THEATRE



Zeiss OPMI Lumera I microscope

- Stereo Coaxial Illumination (SCI), ZEISS OPMI, incorporates a well-established illumination technology for red reflex.
- Contours are more visible
- Centrally controlled with Trio 610 HD camera
- Side observer tube with wireless foot pedal.



ZEISS OPMI LUMERA 300

- The Bright Flex illumination allows you to adapt the brightness of the red reflex to your individual needs – unique in this class.
- The HaMode™ filter allows surgeons who prefer halogen to quickly switch to a light spectrum equivalent to halogen.



Centurion Vision System



- Active Fluids Technology- Dynamically manages the IOP inside the eye during surgery.
- Uses compression plates to adjust pressure on BSS compensating for changes in the eye.
- Accelerated cataract removal. Enhanced torsional efficiency. Reduced repulsion
- **Reduces heat transfer inside the eye**
- Is an improvement over ALCON INFINITY machine, we were already using at JEH

Ophthalmology OPD

Optical Biometer: IOL Master 700

Measurement in less than 45 seconds

SWEPT Source OCT technology, ZEISS
IOL Master 700



Non
Contact
Tonometry-To
measure intra
ocular pressure



Humphrey Visual Field Analyzer



Nd: YAG Laser Iridotomy



Optical Coherence Tomography



Retina LASERS:
Indirect method



ROP Screening



Slit Lamp Photography



Ultra Sonography B-scan



Digital Lensometer



TOPCON AUTOREFRACTOMETER



Synoptophore

